

K79

Ride on Floor Scrubber

Operation Instructions



Do not use this device without reading this manual.

Preface

Thank you for choosing our cleaning equipment. We are confident to provide you with this equipment, which is produced through the latest technology and strict quality control.

This manual is designed to help you understand the equipment operation and maintenance, so you can have a more comfortable and efficient product experience. Please read through this manual before using equipment.

Safety Precautions

To ensure the safety of you and your device, please follow these important usage rules!

Do not use this device under the influence of alcohol or medication.

Before any maintenance or repair, please turn off all switches.

This machine must be used by qualified and authorized personnel. Minors and disabled persons are not allowed to use it.

Keep sparks, flames, and smoke away from batteries.

Do not use it in places with dangerous, flammable, or explosive gases, liquids, or steam.

Dress appropriately and do not wear loose clothing or jewelry; keep clothing, gloves, and hair away from moving parts.

Please do not smoke while charging the battery.

In the event of a fire, remember to use a powder fire extinguisher rather than water.

Even when the machine is to be dismantled and scrapped, the process must be watched because some harmful substances (such as batteries, waste oil, etc.) meet the standards and should be sent to a specific center for processing.

Safe Use


1. Before using the equipment, please read this user manual carefully, which will ensure that you are familiar with the control and maintenance requirements of the equipment and help you use the equipment safely.


2. If the machine is used by other people, please be sure to hand over the instruction manual together and tell them to read this manual carefully before using it.


While reading this user manual

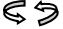
This manual covers all configurations of this series of products; therefore, you may find that some of the information does not apply to your device.

All information, specifications and illustrations in this manual will be effective once it is published. Our company reserves the right to change specifications or designs without prior notice.

In this manual, we use () symbol along with the word "Warning" to indicate the existence of a hazard that may result in death or serious personal injury; in order to avoid or reduce the hazard, the steps must be strictly followed.

In this manual, we use () symbol along with the word "Caution" to indicate the existence of hazards that may cause minor or moderate personal injury or equipment damage; in order to avoid or reduce the hazard, the steps must be strictly followed.

A mark similar to this () indicates that the arrow points in the direction of the equipment's forward direction.

An arrow similar to this () indicates movement or action.

Contents

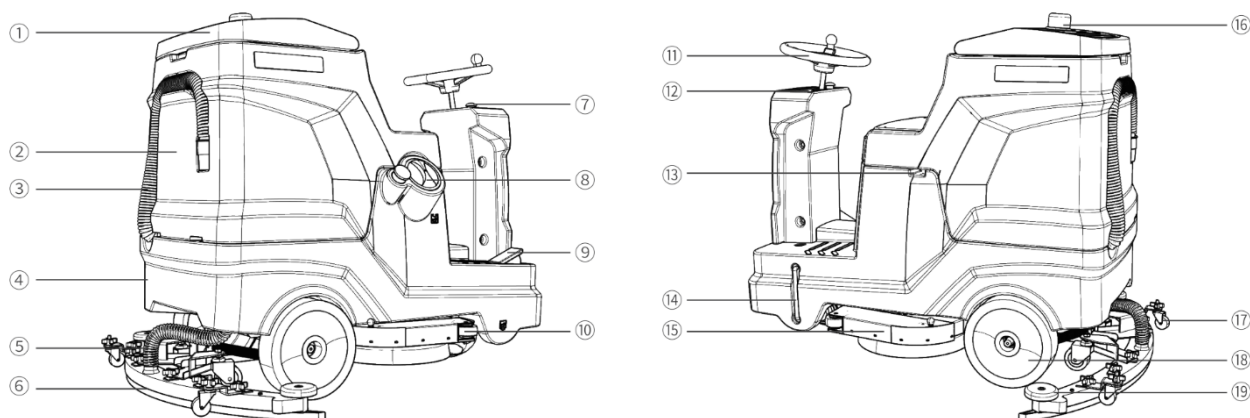
Chapter 1 Product Introduction	1
1.1 Applicable scenarios	1
1.2 Equipment Overview	1
1.3 Controlling panel/Buttons.	2
1.4 Accessories List.....	2
1.5 Consumables and Optional Accessories	2
Chapter 2 Installation	3
2.1 Unloading	3
2.2 Installation.....	3
2.2.1 Connecting the battery cables.	3
2.2.2 Squeegee installation.....	3
Chapter 3 Inspection and adjustment before use	4
3.1 Check the battery.	4
3.2 Check clean water level	4
3.3 Check sewage level.....	4
3.4 Check the wear of the brush plate.....	4
3.5 Check the wear of the rubber strips.	4
Chapter 4 Operation instructions	5
4.1 Driving	5
4.2 Scrubbing.....	5
4.3 Discharging sewage	6
4.4 Shutting down.	6
4.5 Charging	6
Chapter 5 Cleaning and maintenance	7
5.1 Cleaning.....	7
5.2 Maintenance	7
5.2.1 Replacement and installation of brush plate	7
5.2.2 Replacement and installation of rubber strips	8
5.2.3 Removing and installation of the filter.	8
Chapter 6 Transportation and Storage	9
6.1 Transportation	9
6.2 Storage	9
Chapter 7 Common Problems	10
Chapter 8 Technical parameters.....	11
Warranty Card	12

Chapter 1 Product Introduction

1.1 Applicable scenarios

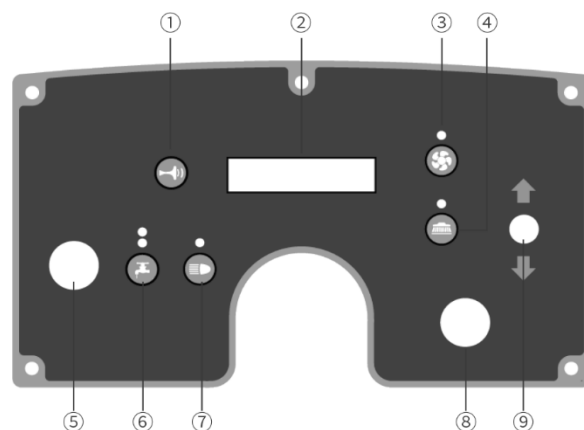
This equipment can be used in a variety of scenarios, including commercial and industrial places , such as hotels, schools, hospitals, industrial offices, supermarkets, office buildings, etc.; for epoxy floors, PVC floors, terrazzo, wear-resistant floors, tiles and cement floors , wooden floors, rubber floors, different floors can be cleaned with brush plates made of different materials.

1.2 Equipment Overview



N0.	Name	Function
①	Sewage tank cover	For sealing
②	Sewage tank	Store recycled sewage
③	Sewage draining tube	Discharge sewage from the recovery tank
④	Solution tank	Store clean water
⑤	Sewage suction tube	Suck ground sewage into the tank
⑥	Squeegee	Collect ground sewage
⑦	Emergency stop button	In an emergency, press this switch and the entire machine will be powered off
⑧	Clean water inlet port	For adding clean water
⑨	Accelerator	For machine acceleration and deceleration
⑩	Anti-collision wheel for brush plate	For protection
⑪	Steering wheel	Control driving direction
⑫	Control panel	Main function console
⑬	Charging port	Battery charging port
⑭	Clean water level tube	Display the amount of clean water in the solution tank
⑮	Water retaining strip	Prevent clean water from splashing as the brush plate rotates
⑯	Warning Light	For warning
⑰	Squeegee universal wheel	Adjust the distance between rubber strips and ground
⑱	Rear wheel	Walking rear wheel
⑲	Anti-collision wheel for squeegee	For protection

1.3 Controlling panel/Buttons.



NO.	Name	Function
①	Horn switch	Press this button and the horn will sound
②	Display panel	Display machine's status
③	Suction start/stop switch	Control the lifting and lowering of the squeegee and the start and stop of the suction motor
④	Brush plate start/stop switch	Control the lifting and lowering of the brush plate and the start and stop of the brush motor
⑤	Emergency stop switch	In an emergency, press this button to shut down the entire machine
⑥	Water valve switch	Press this switch and water will come out of the brush plate
⑦	Headlight button	Press this switch to turn on the headlight
⑧	Key switch	For powering on and shutting down the machine
⑨	Forward and backward switch	Control the machine to move forward/ backward

1.4 Accessories List

When you open the packaging box, you will find that it contains the following components. Please check the components listed in the table. If there are anything missing, please contact us in time.

NO.	Name	Quantity
①	Host	1
②	Charging cable	1
③	Squeegee assembly	1
④	Tool kit	1
⑤	Operation instructions	1
⑥	Warranty card	1

1.5 Consumables and Optional Accessories

The consumables of this equipment are listed in the table below. When any of them is worn, you need to purchase or replace it.

This equipment can cope with different scenarios through different optional accessories, which you can purchase through suppliers or manufacturers.

Consumables	Optional Accessories
Brush plate	Pad holder
Rubber strip	Cleaning pad (red)
Pad holder	Cleaning pad (white)
Cleaning pad (red)	Liquid-filled battery
Cleaning pad (white)	Lead-acid maintenance-free battery

Chapter 2 Installation

2.1 Unloading

Caution

Please carefully disassemble the outer package to avoid damage to the machine shell.

It is recommended to keep the packaging boxes after receiving the goods so that the machine can be repackaged during later product transportation or return or exchanged.

It is prohibited to violently unload the machine to avoid damaging the parts.

Place the unloading wooden pallet, remove the wooden blocks that fix the big wheels, and then move the machine backwards to unload the equipment from the pallet.

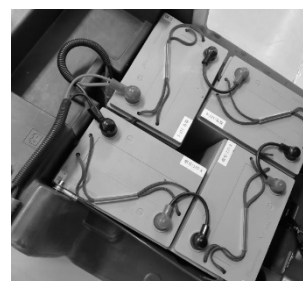
2.2 Installation

2.2.1 Connecting the battery cables.

Make sure there is no water in the recovery tank, then lift the tank backwards, and check whether the wiring harness on the battery is connected and secure.

Caution

Due to the different distances of logistics routes, in order to avoid battery loss during long journeys, the battery cables have been disconnected at the factory.



2.2.2 Squeegee installation

Step 1: Turn on the key switch.

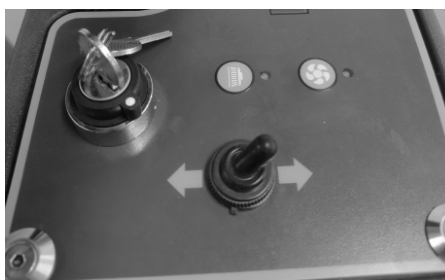
Step 2: Press the suction start/stop switch to lower the squeegee to the ground, and then turn off the key switch.

Step 3: Align the squeegee with the holes and install it on the swing tail and tighten the cross knobs.

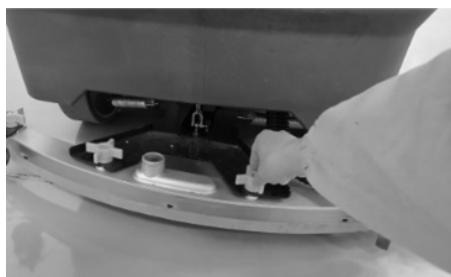
Step 4: Insert the suction tube into the suction port of the squeegee to complete the installation.



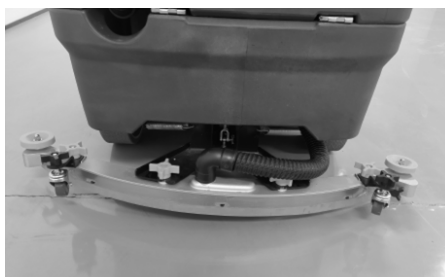
Step 1



Step 2



Step 3



Step 4

Chapter 3 Inspection and adjustment before use

3.1 Check the battery.

After turning on the power key switch, the battery meter will display the current voltage of the battery. When the voltage is about 21V, please charge it in time.

Caution

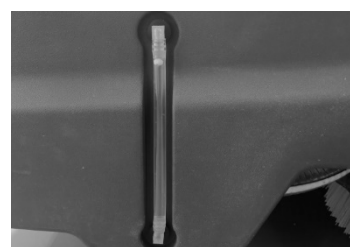
During the use of the battery, deep discharge will cause the battery capacity to decrease and its life to be shortened. For example: the battery is often used below 21V and is not charged in time.

3.2 Check clean water level

Observe the water volume through the clean water level tube. Generally, you should add the liquid level to 80L.

Caution

Please ensure that there is sufficient water and avoid using the suction motor when there is no water. Otherwise, the motor may take in dust. In severe cases, the noise of the suction motor will become louder, or the suction power will be insufficient.



3.3 Check sewage level

Open the recovery tank to check the amount of sewage (the recovery tank of this machine is equipped with a sensor. When the sewage reaches the discharge standard, the suction motor will stop working).

Caution

Please ensure that there is sufficient water and avoid using the suction motor when there is no water. Otherwise, the motor may take in dust. In severe cases, the noise of the suction motor will become louder, or the suction power will be insufficient.

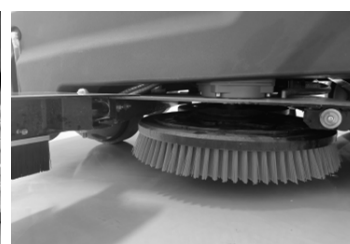


3.4 Check the wear of the brush plate.

Open the brush plate cover to check the length of the bristles. If the length is close to 1.5cm, please replace the brush plate in time. For details, see [Chapter 5 5.2.1 Brush Disk Replacement and Installation]

Caution

If the brush plate is not replaced in time after it is worn, it will cause the water retaining strip to wear, and in serious cases, it will cause damage to the motor.



3.5 Check the wear of the rubber strips.

Rubber strips: Check whether the strips are damaged, deformed, aged or cracked. If so, please replace them in time. For details, see [Chapter 5, 5.2.2 Replacement and Installation of Rubber Strips].

Chapter 4 Operation instructions

4.1 Driving

Step 1: Turn on the main power key switch of the machine.

Step 2: Turn the forward/backward switch as needed, and lightly press the accelerator pedal to move the machine forward and backward; **Step 3** When you need the machine to stop, release the accelerator pedal and the solenoid brake will work until the machine comes to a complete stop.

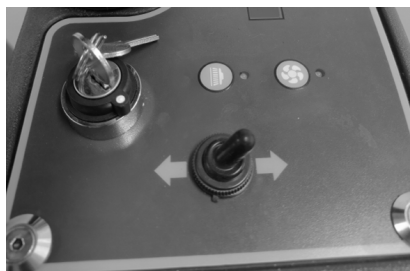
Step 3: When you need the machine to stop, release the accelerator pedal and the solenoid brake will work until the machine comes to a complete stop.

Caution

When the machine needs to be moved backwards or changed places, the brush plate and squeegee should be raised off the ground to avoid wear of the brush plate and deformation of the rubber strips or squeegee sheet metal parts.



Step 1



Step 2



Step 3

4.2 Scrubbing

Step 1: Turn on the key switch of the machine.

Step 2: Turn on the mechanical water valve switch (at the bottom of the nose).

Step 3: Press the brush plate Start/Stop and suction Start/Stop switches to lower the brush plate and squeegee to the ground.

Step 4: Press the water valve on/Off button.

Step 5: Set the forward/backward switch to "Forward".

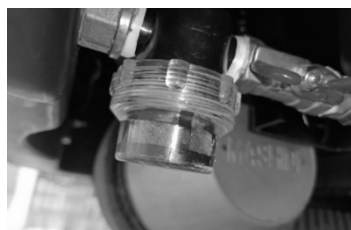
Step 6: Press the accelerator pedal lightly and hold the steering wheel firmly to start cleaning.

Caution

Avoid stopping the machine in the same place for a long time with the brush plate working, as this will leave unnecessary marks on the ground.



Step 1



Step 2



Step 3



Step 4



Step 5



Step 6

4.3 Discharging sewage

Step 1: Push the machine to a site that meets the sewage discharge standards, stop the machine, and turn off the power.

Step 2: Remove the sewage tube from the clamp at the rear of the machine, place it downwards, open the tube cover, and discharge the water. The inner wall of the tank can be appropriately rinsed with clean water.



4.4 Shutting down.

Step 1: Drive the machine to a flat ground, empty water in the water tanks.

Step 2: Press the brush plate start/stop and suction start/stop switches to stop the brush plate and squeegee and lift them off the ground.

Step 3: Drive the machine into a flat and ventilated indoor area.

Step 4: Turn off the main power switch and remove the key.



Step 1



Step 2



Step 3



Step 4

4.5 Charging

The correct way to charge battery is to plug in the battery first, then the mains power; after charging, cut off the mains power first, and then the battery plug.

The power system of this floor scrubber is composed of two 12V maintenance-free lead-acid batteries connected in series or a whole 24V lithium battery, and the system voltage is 24V.

When the machine has been operating for a period, the battery power will drop. When the last two bars of the power meter are red, or the voltage is lower than 21.6V, it means that the power is insufficient and needs to be charged in time.

When maintaining the battery, please wear protective gloves to avoid contact with acidic substances of the battery.

Check whether the battery connection wire is worn and whether the contacts are loose and replace it if necessary.

the battery terminals should be kept clean and dry, without debris and dust covering them, otherwise it will be extremely detrimental to the battery, and in serious cases, it will burn the battery.

In order to ensure that the battery has a long service life, it should be charged in time after the machine finishes working, but deep discharge is strictly prohibited.

when the machine is not used for a long time, please fully charge the battery, and store the battery with the positive pole (+) disconnected.

Caution

During use of the battery, deep discharge will cause the battery capacity to decrease and its life to be shortened. For example: the battery is often used when the voltage is below 21V and is not charged in time.

If the machine will not be used for a long time (more than 15 days), it needs to be fully charged in advance, and as shown in the figure below, you should cut off the connecting wires on the battery and wrap them with insulating tape to prevent the battery from losing power due to long-term non-use.



Chapter 5 Cleaning and maintenance

Proper cleaning and maintenance will increase the service life of your machine, so please check and clean the machine regularly!

5.1 Cleaning

Check and clean the wheel set and remove entangled objects.

Clean the sewage tank and sewage tubes regularly and use water to flush the dirt in the tank and blockages in the tubes.

Clean the dirt under the rubber strips regularly and wipe the strips with a cotton rag.

Check the water filter regularly. When there are impurities in the transparent cover, rotate and unscrew the cover, and rinse it and the filter screen repeatedly with clean water.

Caution

The machine is not a tightly waterproof device. Do not flush the machine directly with water in that it may cause a short circuit in your machine or burn out the original electrical components.



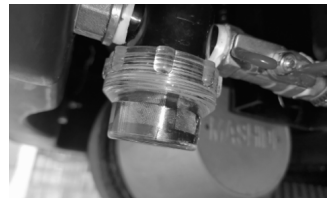
Step 1



Step 2



Step 3



Step 4

5.2 Maintenance

5.2.1 Replacement and installation of brush plate

Step 1: Park the machine on a flat ground, keep the brush plate raised, turn off the key switch, and make sure that the machine is powered off.

Step 2: Open the brush plate cover, grab the bristles with both hands, and then quickly rotate the brush plate in any direction to remove it.

Step 3: When installing the brush plate, make sure the flange is aligned with the buttonhole, and then quickly rotate it in any direction to complete the installation.

Caution

There are two types of cleaning pads with different hardness. Choose the more suitable one according to the site.

Replacing the pad holder: The pad holder can be purchased through our company's platform. The specific replacement is to place the cleaning pad at the bottom of the pad holder and make them fit firmly; The cleaning pad and the pad holder must fit neatly together, then install the pad holder on the machine. The steps are the same as that of the brush plate.

The cleaning pad must be soaked in clean water before using it for the first time for 10-15 minutes. A dry scouring pad will damage the floor.



5.2.2 Replacement and installation of rubber strips

Removing the squeegee rubber strips

Step 1: Park the machine on a flat ground.

Step 2: Press the suction start/stop switch to lower the squeegee to the ground.

Step 3: Remove the cross-fixing nuts of the squeegee then take out the entire squeegee.

Step 4: Unscrew the squeegee assembly nuts, remove the bottom plate of the squeegee assembly, and then remove the front and rear rubber strips of the squeegee.



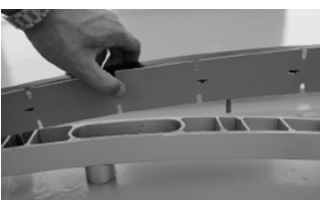
Step 3-1



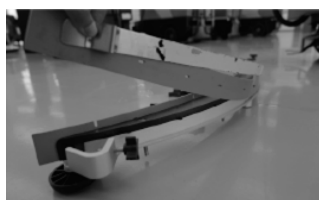
Step 3-2



Step 4-1



Step 4-2



Step 4-3



Step 4-4

Install the squeegee rubber strips.

Step 1: Align the holes of the front rubber strip with the protrusions of the plastic component of the squeegee.

Step 2: Fix the plastic component on the bottom plate of the squeegee.

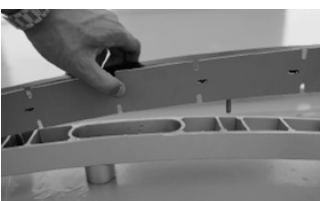
Step 3: Align the holes of the rear rubber strip with the protrusions of the plastic component of the squeegee.

Step 4: Use pressure strips to press both ends.

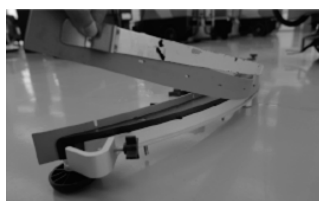
Step 5: Tighten the nuts.



Step 4-1



Step 4-2



Step 4-3



Step 4-4

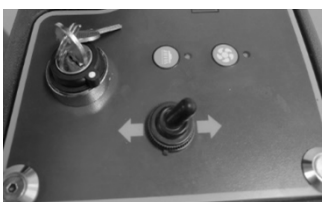
5.2.3 Removing and installation of the filter.

Step 1: Lower the squeegee assembly and observe whether the strips can touch the ground; out the internal filter to clean it.

Step 2: Push the machine to check whether any of the rubber strips is slightly bent and whether there is leakage.

Step 3: If there is a gap between the rubber strips and the ground, you can adjust the component upward through the squeegee universal wheel.

Step 4: If the rubber strips are too close to the ground, you can adjust the component downward through the universal wheel.



Step 1



Step 2



Step 3



Step 4

Chapter 6 Transportation and Storage

6.1 Transportation

If the machine and corresponding accessories need to be lifted, it is recommended that you put them on a pallet and then lift them up with a forklift.

Clean water and sewage must be drained when transporting the machine.

During transportation, in order to prevent various situations from slipping and damage caused by collisions, it is necessary to ensure that the binding is firm, the center of gravity is stable, and the driving safety is ensured. For the transportation vehicles that are in contact with the surface, the surface should be installed with soft pads or hard cardboard packaging. Load and unload lightly, and it is strictly prohibited to drop, hit, roll, press heavily, or put the machine upside down.

6.2 Storage

Before storing the machine, clean it. For details, see [Chapter 5.1 Cleaning].

For machines that will not work in a long time, anti-rust treatment should be done before storage, check the easily corroded parts of the machine, and apply butter.

If the machine will not be used within 15 days, store the machine fully charged in a clean, dry, and away from flammable places.

If the device is not used for a long time, first fully charge the device battery, disconnect the battery connector, and store it at room temperature above 0 degrees. Keep the battery and ask for replenishment once a month.

In areas with lower temperatures, clean water and sewage need to be drained to prevent the water tanks from cracking due to freezing of clean water or sewage.

Chapter 7 Common Problems

Problem	Phenomenon/Part	Troubleshooting method	Solution
Charging failure	Charging failure	If the charger is not connected to the machine, see whether the green light will be on. If the machine is plugged in, the red light is on, and the built-in fan of the charger does not run	Replace the charger
	Charging interface oxidation	Whether there is any obvious oxidation trace on the copper interface	Clean the charging interface oxide
Suction motor not working	Fuse	Check if the fuse is burnt	Replace the fuse
Brush plate motor not working	Fuse	Check if the fuse is burnt	Replace the fuse
Water not coming out	Clean water tube	Whether there is any scale in the transparent tube of the clean water tube	clean water tube
	Filter cover	Whether there is dirt on the filter cover	Clean filter cover
	Solenoid valve	Measure whether the solenoid valve has input voltage	Check the input voltage of the solenoid valve. If it is normal, remove it and clean the blocked part. Replace the solenoid valve if necessary.
Loud noise	Resonance of water absorbing rubber strips and sewage suction port	1. Is there any abnormal sound when the rubber strips are lifted? 2. Is there any obvious vibration in the water absorbing tube?	Adjust the height of the squeegee universal wheel
	Suction motor	1. Is there any abnormal sound when the rubber strips are lifted? 2. Is there still any abnormal sound after the water absorbing tube is pulled out?	Replace the suction motor
Brush plate	Frequent drop	Has the brush plate been lowered to the ground before turning on the switch?	This behavior is an incorrect operation and may easily cause the brush plate buckle to wear. Replace the buckle when necessary.
	Buckle wear	See the brush plate buckle for wear	Replace the brush plate buckle
The machine not sucking water properly	Floating ball cage clogged	Check whether there are two floating balls in the cage	Matters needing attention in daily use
	Tube blocked	Clean the water suction tube	Daily cleaning and maintenance
	Recovery tank sealing circle	Sealing circle aging	Replacement of accessories
	Water marks on the ground	1. Whether the strips are cracked, aged, or deformed 2. Whether the strips are wavy	Replacement of rubber strips
Machine not walking	Solenoid brake	Check whether the solenoid brake is on the downward gear when the machine is not powered on	Contact customer service center
	Accelerator	1. Short-circuit the accelerator connector. If the machine can move, there is something wrong with the accelerator pedal. 2. The fault lamp flashes 7 times.	
	Controller	Use a multimeter to measure whether the controller has input voltage	

Chapter 8 Technical parameters

Category	Parameter
Cleaning width	800mm
Squeegee width	1000mm
Continuous working time	4h
Theoretical working efficiency	6000 m ² /h
Battery capacity	24V/100Ah
Suction motor power	600W
Brush plate motor power	380*2W
Driving motor power	750
Clean water capacity	100L
Sewage capacity	110L
Total weight	316kg
Working size	1400*1000*1250mm

Warranty Card

Name		Tell	
Postal address		Bill No.	
Purchase time		Number	
Product model		Date	
Replace accessories			
Fault description			

